

**Congratulations on the purchase of your hörbert.** You now have a flexible audio system that you can adapt to your individual wishes. Below you will find detailed instructions for hörbert models with 1 or 3 buttons. For further assistance, please contact our service

team Monday to Friday between 9 am and 3 pm.

Email: [service@winzki.de](mailto:service@winzki.de)

Tel. +49 (0)7022 50642-0

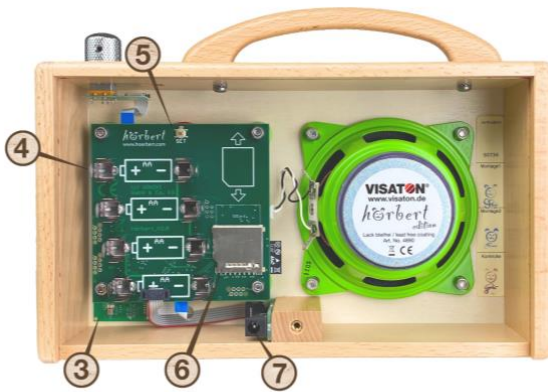
## Table of contents

1	hörbert's controls .....	2	9	W-LAN functions.....	10
2	Commissioning .....	2	9.1	hörbert as Internet radio .....	10
2.1	Open and close hörbert .....	2	10	Recording with a 1 or 3 button hörbert.....	12
2.2	Insert/change memory card .....	2	10.1	Voice recording with a 1 or 3 button hörbert	12
2.3	Insert or change batteries.....	2	10.2	Switch on microphone .....	12
3	Basic functions.....	3	10.3	Specifying the playlists in which recordings	12
3.1	Switching on and off .....	3		should be allowed .....	12
3.2	Set volume.....	3	10.4	Set recording mode via the index.m3u file....	13
3.3	Navigation through hörbert's content via the	3	11	hörbert's power supply .....	13
	playlist buttons .....	3	11.1	Switching between cable operation and	14
4	hörbert software.....	3		battery operation .....	14
4.1	What is the hörbert software used for? .....	3	12	External operating aids .....	14
4.2	System requirements.....	4	13	Problem solving .....	15
4.3	Installing the hörbert software .....	4	14	User instructions .....	16
4.4	Start of the hörbert software .....	4	15	Safety instructions.....	16
4.5	Transferring songs and stories to hörbert's	5	16	Disposal of batteries / electrical appliances ...	16
	memory card.....	5			
5	Changing the hörbert software for a hörbert with	6			
	1 or 3 buttons .....	6			
6	SET settings for an hörbert with 9 buttons .....	7			
6.1	To use the SET template.....	7			
6.2	Operating the SET mode with buttons .....	7			
7	SET settings for a hörbert with 1 or 3 buttons ..	8			
7.1	To set the SET functions.....	8			
7.2	This is how hörbert adopts your new settings ...	9			
8	Bluetooth functions.....	9			
8.1	Pair the hörbert with an external player, e.g.	9			
	mobile phone.....	9			
8.2	Pairing hörbert with Bluetooth headphones....	10			

## 1 hörbert's controls



Picture 1 - hörbert with 3 buttons



Picture 2 - hörbert from the inside

- 1 = On/off switch and rotary control for volume
- 2 = Playlists (1 or 3 buttons)
- 3 = built-in microphone for voice recording (**optional accessory**)
- 4 = Battery clips
- 5 = SET key
- 6 = SD card holder
- 7 = built-in power connection for stationary operation of hörbert with a power supply unit (**optional accessory**)

## 2 Commissioning

### 2.1 Open and close hörbert

**CAUTION!** Do not wear jewellery that may cause short circuits or damage the circuit boards.

**WARNING!** Opening and closing may only be carried out by a suitably qualified adult!

Open:

- 1) Switch off hörbert before opening the rear panel!
- 2) Place hörbert in front of you on a safe and soft surface, with the coloured buttons facing down.
- 3) To open hörbert, turn the back panel screw counterclockwise all the way out. A suitable tool for this is e.g. a coin.
- 4) Now slide the back panel out downwards. Make sure that it does not slip out unintentionally.

Close:

- 1) Push the back panel back in.
- 2) Screw the back panel screw back in place so that it cannot be easily loosened again by hand or with a fingernail.

### 2.2 Insert/change memory card

**CAUTION!** Memory cards may only be inserted or changed by a suitably qualified adult!

- 1) Remove the supplied memory card from the glassine bag or use your own SDHC card between 4 and 512 GB.
- 2) The memory card belongs in the card holder (6). Above it there is a printed card symbol that shows you the direction in which the card must be pushed into or out of the card holder.
- 3) Place the card on the symbol and then carefully slide it down into the card holder until it is slightly visible in the slot of the card holder.
- 4) To remove a card, push it upwards with light pressure on the card surface. Our memory cards have a recess at the top of the edge that you can use to pull the card out with a fingernail.

### 2.3 Insert or change batteries

**CAUTION!** Batteries may only be inserted or changed by a suitably qualified adult!

- 1) To remove the batteries, pull them vertically upwards out of the battery clips (4). The batteries

fit very tightly so that they do not fall out in case of shocks.

**Tip:** As an aid, thread a string underneath a battery. This makes it easy to pull it upwards without damaging the electronics, the battery or the battery clips. Hold the battery firmly while doing this.

- 2) Now insert four AA batteries (1.5 V) - or even better - rechargeable batteries (1.2 or 1.5 V) into the battery clips.
- 3) Make sure that the + and - poles are in the correct position. **Tip:** The batteries audibly click into place. Now push the back panel back in and tighten the back panel screw clockwise. For the last turns, you can again use a coin as an aid.
- 4) **CAUTION!** Do not use batteries where the casing is damaged (e.g. scratched), revealing bare metal underneath. This can lead to short circuits with high heat generation and damage to the batteries and the unit. Always use four batteries of the same type with the same filling level from the same pack.

### 3 Basic functions

#### 3.1 Switching on and off

- 1) Switch hörbert on by pressing 1 x on the top of the rotary knob (1).
- 2) After a short acknowledgement tone, hörbert starts playing from the last heard passage.
- 3) Switch hörbert off again after use by pressing the rotary knob (1) 1 x again.
- 4) hörbert does not switch itself off according to its factory settings, but repeats the playlist from the beginning when the end is reached.

#### 3.2 Set volume

If you turn the rotary knob (1) clockwise, hörbert plays louder.

If you turn the rotary knob (1) counterclockwise, hörbert plays softer.

*hörbert for children* is delivered from the factory in the basic setting "forte", which means that it is not restricted in its respective basic volume. Even in the

"forte" position, the volume complies with the corresponding standards for children's toys.

For *accessible hörberts* specifically designed for people with hearing loss, the basic volume can generally be louder than for standard models for children.

**ATTENTION!** hörberts with modified volume limits are not suitable for children without hearing impairment and may cause hearing damage due to excessive volume!

#### 3.3 Navigation through hörbert's content via the playlist buttons

The contents on hörbert's memory card are organised in playlists.

Behind each of the coloured buttons (2) is a playlist, e.g. different songs or stories one after the other.

There are hörbert models with 1, 3 or 9 playlists.

- 1) To navigate through the music and radio plays on hörbert, press one of the coloured buttons (2). hörbert will now play the first track of the playlist that was stored behind this button.
- 2) The next time you press the same button, hörbert jumps to the second track of the playlist behind this button, and so on. After the last title, hörbert jumps back to the first title of the playlist behind this button.
- 3) If you press a button of a different colour, playback starts at track no. 1 of the corresponding playlist.

### 4 hörbert software

#### 4.1 What is the hörbert software used for?

The hörbert software is a computer programme for transferring music and audio books from a computer to hörbert's memory card. It helps you to assign the audio contents to hörbert's coloured buttons and to keep track of them.

With the hörbert software, you also determine on which of the coloured buttons recordings from Bluetooth, Internet radio or microphone can be saved. With a hörbert with 1 or 3 buttons, the hörbert software is also used to configure the SET settings, such as

switching Bluetooth and pairing on/off, W-LAN and the optional built-in microphone, sleep timer and volume limit.

**NOTE:** For hörbert models from October 2021 (model without toggle switch), the hörbert software contains new functions that are no longer compatible with the hörbert 2011 model.

Therefore, the hörbert software first shows a selection of which hörbert model you own.

Left: With toggle switch: hörbert model 2011.

Right: Without toggle switch: hörbert model 2021.

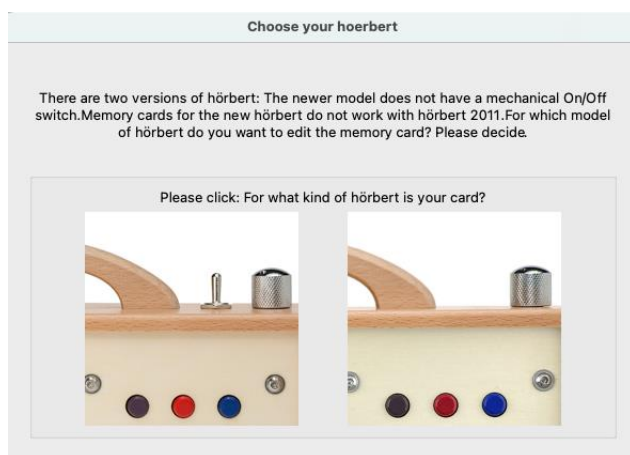


Figure 3 - Query of the hörbert model

**Attention!** Memory cards that have been recorded and configured for the new hörbert model 2021 will **not** work in hörberts with the older electronics from hörbert 2011.

Memory cards that have been recorded for hörbert 2011 can be played in the newer hörbert 2021.

#### 4.2 System requirements

- PC or Mac
- Operating system: Windows 10 or higher, or Mac OS X from version 10.14. or Linux (e.g. Ubuntu Linux from 16.0.4)

Are you using an older operating system?

Please contact [service@winzki.de](mailto:service@winzki.de) for more information and help.

- SD card reader, built-in or on a USB port
- Screen resolution at least 1024x768 pixels
- At least 8GB free hard disk space

- At least 4GB RAM

#### 4.3 Installing the hörbert software

You can find the latest installation files for the hörbert software on the Internet for free download for Windows, macOS or Linux at:

<https://en.hoerbert.com/customer-service/downloads-and-questions-about-transferring-contents/>

Download the hörbert software from there and install it on your computer. Depending on your system, you may be asked for an administration password so that the hörbert software can be installed on your computer. Simply follow the instructions of the installation programme and your operating system.

In the macOS installer, you have to drag the bear symbol in the direction of the arrow onto the programmes, then the installation starts.

Under Windows, start the installation by double-clicking on the previously downloaded installation file called "hoerbert.exe".

Under Linux, you must give the ApplImage execution rights and can execute the ApplImage immediately.

After successful installation, you will find this symbol in your programmes:



#### 4.4 Start of the hörbert software

- 1) Always start the hörbert software via this bear symbol.
- 2) Select your hörbert when asked for the model. See figure 3.
- 3) Remove the memory card from hörbert and insert it into the card reader slot or into the external card reader of your computer.
- 4) The hörbert software now recognises the card as a new drive and displays its name. In this example, the card is named "HOERBERT".



Illustration 4 - Select drive and read in card

- 5) Read in the memory card by clicking on the button "Read in card" (picture 4)

When a pre-recorded memory card is read in for the first time, the hörbert software will create a backup of the card contents and convert already existing titles into the space-saving MP3 format. Please confirm all instructions of the hörbert software accordingly. When the card has been read in, the number of titles per button appears on the button symbols.

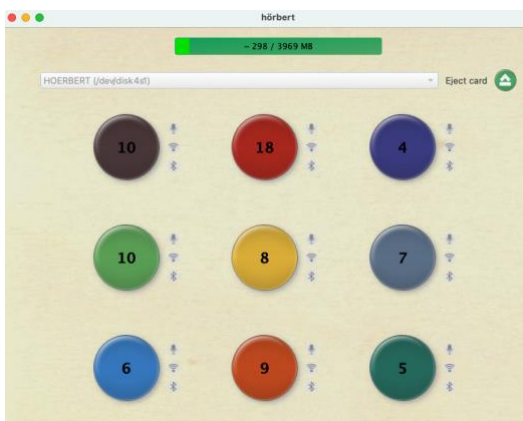


Figure 5 - Number of titles per button and filling level of the card

#### 4.5 Transferring songs and stories to hörbert's memory card

To transfer your own songs and radio plays to the memory card, you need the hörbert software. To illustrate this, you can also watch the video "hörbert instructions for the software and the memory card" on

YouTube:

<https://www.youtube.com/watch?v=8ChBXlx66ll&t=1s>

##### 4.5.1 Edit a playlist

Click on one of the coloured circles for the desired hörbert button to open the playlist behind it. The content window of the selected button opens, here in the example the light green button.



Illustration 6 – Button Content Window

- 4.5.2 Adding files to a playlist and removing them  
Use the **plus symbol next to "File"** to add new titles to the list.

For this purpose, a file window of your operating system opens with which you can search for and select files as usual. Alternatively, you can use the mouse to drag and drop files from one window into the playlist window if you have previously arranged both windows next to each other.

**You can delete a file with the minus symbol in the middle.** First select the file and then click on the minus sign.

##### 4.5.3 Moving a file within a playlist

Within the playlist, you can change the order of the titles by clicking-and-dragging with the mouse.

##### 4.5.4 Listen to files

You can listen to tracks in the Listen software by highlighting a track and then pressing the space bar.

##### 4.5.5 Insert silence

If you want to insert a longer pause (silence) after a title, highlight the title in the content window and select

the silence duration in the top left corner and then click on the plus symbol next to "silence". This inserts the silence into the playlist behind the selected title. You can move the silence up or down with the mouse like other files.

#### 4.5.6 Scissor function:

You can have particularly long titles split automatically if you put the tick next to the scissors. If you click 1 x in the box next to the scissors, the file is divided at a suitable silent point, if you click 2 x, the file is divided into a 3-minute section. A „3“ therefore appears in the box.

#### 4.5.7 Closing the playlist window

When you have finished editing a playlist, confirm this by clicking on the white-green tick icon at the top right of the window.



Figure 7 - Confirming the changes in the playlist

After clicking on the tick, the hörbert software saves the changes and displays a progress percentage on the playlist button.

You can continue editing the next playlist in parallel by clicking on the next button colour.

If you click on the white cross in the red circle at the top right of the window, your changes in the playlist are discarded and the content window closes.

The subsequent ejection of the card is important. When you have finished editing all the coloured buttons, be sure to eject the memory card properly using the eject button in the hörbert software at the top right of the start window. Wait for the safety message before disconnecting the card from the computer.

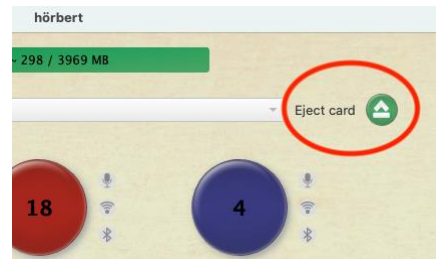


Figure 8 - Eject button

#### 4.5.8 Moving files from one playlist to another

This function is especially interesting if you have a hörbert with only one or three large buttons and have received a pre-recorded memory card from us.

To move titles from one button to another, proceed as follows:

- 1) Open the button content window by clicking on the corresponding button.
- 2) Select the titles you want to move.
- 3) In the hörbert software menu, select the item "Edit" -> "Move to Playlist". Select whether you want to move the tracks to the beginning or to the end of another playlist and select the desired playlist.

## 5 Changing the hörbert software for a hörbert with 1 or 3 buttons

If you have a hörbert with one or three large buttons, you can change the view in the hörbert software according to the available buttons. Only the buttons that are actually present are then displayed, but the contents on the buttons that are not visible remain on the memory card. You can thus switch back and forth at any time.

- 1) Start the hörbert software
- 2) In the hörbert software menu, select "Extras" -> "Advanced functions".
- 3) Now make the selection for one or three buttons:

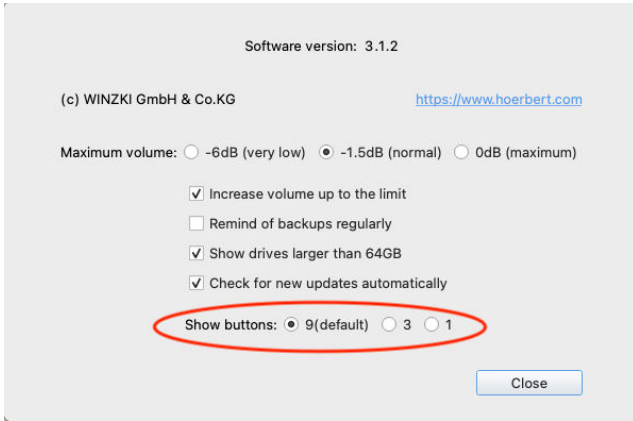


Figure 9 - Extras -> Change view to 1/3 button

Afterwards, the view for a 3-button hörbert looks like this, for example:

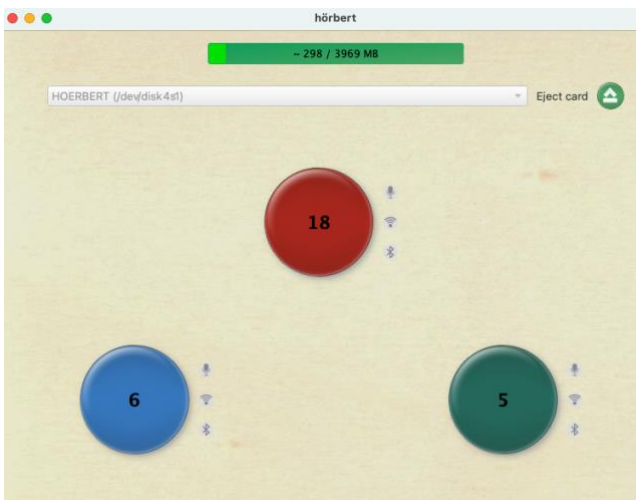


Figure 10 - View of 3-button listener

## 6 SET settings for an hörbert with 9 buttons

hörbert is available in variants with 1, 3 or 9 playlists. Certain settings can be made for a hörbert with 9 buttons directly after pressing the SET button.

On a hörbert with 9 playlists, Bluetooth and pairing can be activated directly on the unit: The SET template supplied is used to set the SET functions on a hörbert with 9 coloured buttons.



Figure 11 - SET template for hörbert with 9 playlists

### 6.1 To use the SET template

Adjusting functions in SET mode generates signal tones.

A double low tone means: zero or off. This is shown on the SET template with two red crosses

A single, high tone means: one, or a higher value, and is represented by a green tick on the SET template

To change settings, press a coloured button repeatedly until the signal tone indicates the desired setting.

### 6.2 Operating the SET mode with buttons

- Switch on hörbert
- Press the **SET** button (5) inside the upper receiver 1 x.

#### 6.2.1 Switch Sleep Timer on/off

- Press the purple button until you hear a single high-pitched beep (on) or a double low-pitched beep (off).
- Each press of the dark red button extends the playing time by 1 hour.
- Each press of the dark blue button extends the playing time by 10 minutes.

- To count how many times you have to press the dark red or dark blue button, press until you hear a double deep beep and count up the hours or minutes from there. (Pressing red once and blue twice means that hörbert will always switch off after 1 hour and 20 minutes).

#### 6.2.2 Switch Bluetooth on/off

- To allow Bluetooth radio, press the light green button repeatedly until you hear a single, high-pitched beep.
- To allow pairing, press the yellow button repeatedly until a single, high-pitched beep is heard.
- To delete all existing pairings, press the pigeon blue button once.

Bluetooth is required if you want to use wireless headphones with hörbert, or if you want to use hörbert as a loudspeaker for your mobile phone or tablet to listen to Spotify or Audible content, for example.

#### 6.2.3 Switch volume limit on/off

- With a high beep after pressing the light blue button, hörbert is in normal mode, with a low beep hörbert's additional volume limit is active.

#### 6.2.4 Switch WiFi / WLAN on/off

- To allow WLAN radio, press the orange button repeatedly until you hear a single, high-pitched beep.

WiFi / WLAN is required for Internet radio playback.

#### 6.2.5 Switch microphone on/off

- To use the microphone, press the dark green button repeatedly until you hear a single, high-pitched beep.

The microphone is required for your own voice recordings. It is an optional accessory that can either be ordered or retrofitted in our hörbert workshop.

- 6.2.6 **IMPORTANT:** To save your settings, briefly press the **SET button** inside once more. To discard the changes, switch off hörbert by pressing the rotary knob.

## 7 SET settings for a hörbert with 1 or 3 buttons

If you have a *hörbert with 1 or 3 buttons*, make these settings using the hörbert software instead.

The hörbert software writes the settings to a memory card into a file named "index.m3u", which is later read in again by hörbert.

The SET functions include:

- Sleep Timer Settings
- Bluetooth radio (on/off/pairing)
- WLAN radio (on/off)
- Volume limit (pianissimo/forte)
- Microphone (on/off)
- Reset to factory settings

### 7.1 To set the SET functions

- Start the hörbert software on your computer and insert hörbert's memory card into your computer.
- In the hörbert software menu, select **"Extras"** -> **"Configure Set Mode"**. You will see the following picture:

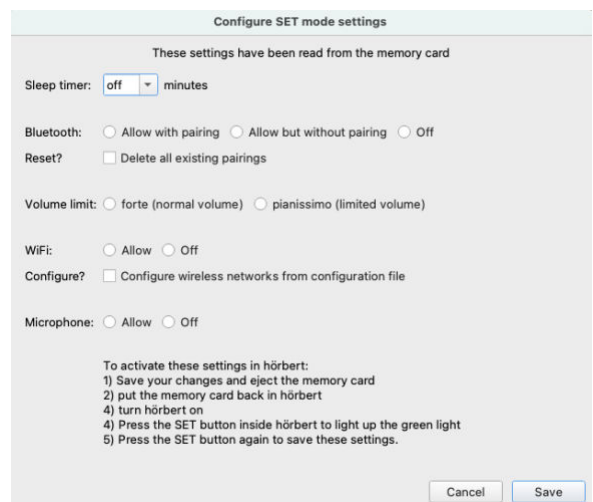


Figure 12 - Configuring SET functions

Here you can now make the following settings:



- 3) Activate or deactivate the **sleep timer**: In the Sleep Timer line, select the desired time after which hörbert should automatically switch off.
- 4) Activate or deactivate Bluetooth and pairing: In the "**Bluetooth**" line, select the setting "**On with pairing**" if you want to connect a new external player, e.g. a mobile phone.  
If you have successfully paired all the desired players in your household with hörbert once, you can select "**On without pairing**" in this menu. After that, no new or unwanted third-party devices can connect to hörbert.
- 5) Volume limit: Select the setting "**pianissimo** (limited volume)" or "**forte**" (normal latitude) for the volume limit.
- 6) Activate and deactivate WiFi for the Internet radio and make the necessary WLAN settings via "Configure?"
- 7) Activate or deactivate the microphone (If your hörbert has a built-in microphone)
- 8) Click on "**Save**" to save the settings you have made.
- 9) Now eject the memory card properly using the eject button in the hörbert software and disconnect the card from the computer after it has been released by the hörbert software.
- 10) Insert the card into hörbert.
- 11) **Now follow the steps in the following chapter 7.2 to make your changes effective in hörbert.**

## 7.2 This is how hörbert adopts your new settings

Most of the settings made by the hörbert software in an index.m3u file on the memory card are immediately taken over by hörbert from the memory card after the next start.

For security reasons, there are some settings that hörbert only accepts from the memory card once it has been put into **SET** mode with this memory card. This applies to the following settings:

- Sleep Timer
- Bluetooth mode (on/off/pairing)

- WiFi mode (on/off)
- Volume limit (pianissimo/forte)
- Microphone (on/off)
- Reset to factory settings

The following steps are necessary to read these settings into hörbert:



Figure 13 - SET button

- 1) Switch on hörbert. He starts playing.
- 2) Briefly press the **SET button** (5) inside the upper receiver once.
- 3) Wait two seconds and press the **SET button** again.
- 4) hörbert emits two beeps. This means that the file index.m3u has been read in successfully.
- 5) hörbert restarts and now plays from its loudspeaker again.

## 8 Bluetooth functions

To use hörbert's Bluetooth functions, you must first switch on hörbert's Bluetooth functions in **SET mode** as described above.

### 8.1 Pair the hörbert with an external player, e.g. mobile phone.

Now you can start streaming:

- 1) To switch hörbert to **Bluetooth speaker mode**, press the rotary knob (1) **twice in succession**. You virtually switch hörbert on and immediately off again. hörbert emits **three ascending signal tones as confirmation** - if it has been correctly switched to speaker mode.
- 2) Inside hörbert, the LED on the SET button (5) now flashes for approx. 60 seconds. This is how long you have time to pair hörbert with an external player, in our example with a mobile phone.

- 3) Start a search for new Bluetooth devices on your mobile phone. hörbert appears in the list of Bluetooth devices in the vicinity with the name "hörbert" and its so-called MAC address so that you can also distinguish between several hörberts.
- 4) Pair your mobile phone with hörbert.  
After pairing, hörbert is connected to the mobile phone as a Bluetooth speaker. All media content from the mobile phone (no calls) is now output via hörbert's loudspeaker.
- 5) The mobile phone can control hörbert's volume and, conversely, hörbert can also control the volume of the mobile phone. In doing so, hörbert's volume limits are taken into account.
- 6) To stop Bluetooth streaming, stop playback on the mobile phone. hörbert is then still on and in Bluetooth speaker mode.
- 7) To end the Bluetooth speaker mode or to switch off hörbert, press the rotary knob once to switch hörbert off.
- 8) If you only disconnect the mobile phone and do not switch hörbert off, it will start a search for a new Bluetooth player for 60 seconds. If it does not find one, it switches off after this time.
- 9) **ATTENTION:** If another external player is active and in Bluetooth mode nearby, hörbert may connect to it unnoticed and continue to consume power.  
**Therefore, it is generally recommended to switch off hörbert after using it as a Bluetooth speaker via the rotary knob.**

## 8.2 Pairing hörbert with Bluetooth headphones

To connect a hörbert with 1 or 3 buttons to Bluetooth headphones, Bluetooth and pairing must have been activated via the hörbert software beforehand.

Then connect the headphones as follows:

- 1) Switch hörbert on by pressing the rotary knob (1) **once**.
- 2) The LED inside hörbert will now flash for 60 seconds with a double flash every second. This is how long you have time to pair hörbert with headphones. If hörbert only flashes once per

second, pairing is not switched on and hörbert will then not accept any new devices.

- 3) Switch on the first pair of headphones and put the headphones into pairing mode. Some headphones do this by themselves, for some you still have to press a Bluetooth button that may be present.
- 4) **NOTE:** With the **POGS "Gecko" headphones** that we offer in the hörbert shop, you must in any case press the Bluetooth button for a long time after turning the headphones on, so that the headphones do not switch themselves off after 5 minutes.
- 5) hörbert and the headphones connect and the sound is now output via the headphones.
- 6) After connecting with the first pair of headphones, the LED of hörbert flashes again for 30 seconds. hörbert searches for a second pair of headphones to connect with.  
If you want to pair a second headphone, also switch on this headphone during this 30-second phase. hörbert and the second headphone now connect and the sound is also output via the second headphone.
- 7) Only when both headphones are switched off again does hörbert play back the sound via its built-in loudspeaker.

## 9 W-LAN functions

To use hörbert's W-LAN functions, you must first switch on hörbert's W-LAN functions in **SET mode** as described above in chapter 7.

### 9.1 hörbert as Internet radio

A little preparation in four steps is necessary so that hörbert can access the Internet via a 2.4 GHz WLAN:

#### First step:

##### 9.1.1 Activate WiFi / WLAN

- 1) Start the hörbert software and insert hörbert's memory card into the computer.
- 2) In the hörbert software menu, select "**Extras**" -> "**Configure Set Mode**". You will see the following menu:

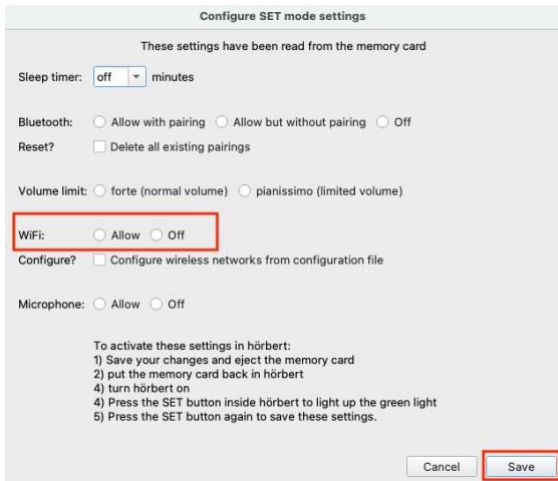


Figure 14 - Configure SET functions

- 3) Select the setting "Allow" for "WiFi".
- 4) Click on "Save" to save these settings.

**Second step:**

9.1.2 Enter WLAN access data so that hörbert can use your wireless network.

- 1) In the hörbert software menu, select the item "Extras" -> "Configure WiFi connections". You will see Fig. 15. You can now set up to 5 different WLANs.
- 2) **SSID** = enter the name of your WLAN here.  
**ATTENTION:** The WLAN name must **not** contain **any spaces**. It must be a **2.4 GHz WLAN**. This can be set on your WLAN router at home.
- 3) **Passkey:** The password for your WLAN access must be entered here.
- 4) Then click on "Save" to save the settings to the memory card from which hörbert will read them later.

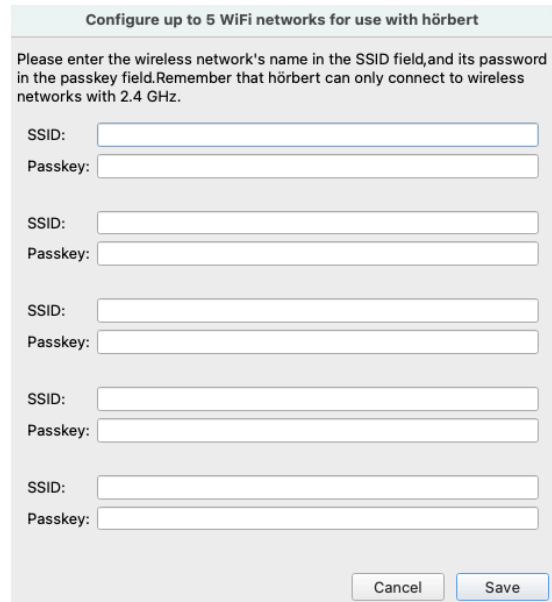


Figure 15 - Enter WLAN access data

**Third step:**

9.1.3 Enter URL(s) for Internet Radio Streaming

- 1) Open a playlist by clicking on a coloured circle.

**Tip:** Check out <https://laut.fm/>, for example. There you will find radio stations of all genres. If you click on a station there, a window opens in which you will find the streaming URL address of the station at the bottom left. Insert this URL address into the hörbert playlist.

- 2) To store a web radio station, click on the plus sign behind "URL", a line opens in which you can now enter the URL address of the web radio stream:

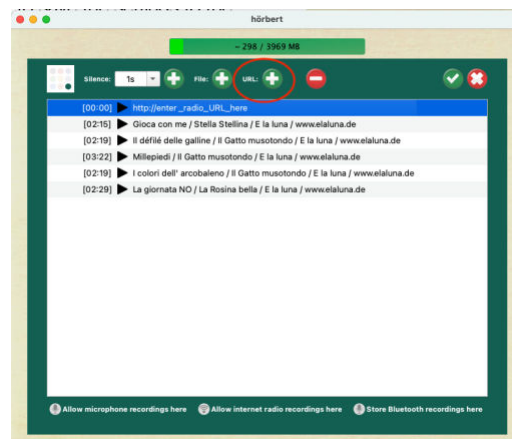


Figure 16 - Add Internet Radio URL

The following stream formats are possible: mp3, aac, pls or m3u streams.

Whether the address begins with `https://` or `http://` is irrelevant, whereby unencrypted `http://` addresses can be played back somewhat more power-efficiently.

- 3) When you have stored all the desired URL addresses, exit the content window by clicking on the small white tick in the round green circle at the top right.
- 4) Now eject the memory card properly via the eject button (see figure 8) in the hörbert software and disconnect the card from the computer after releasing it.

#### Fourth and final step:

##### 9.1.4 Read WLAN access data into hörbert

- 1) After carrying out all the previous steps in chapter 10, insert the memory card back into hörbert's SD card holder.
- 2) Turn hörbert on and wait for it to play.
- 3) Then press the **SET button** (5) inside hörbert briefly 1 x so that the green light lights up.
- 4) Briefly press the **SET button once again** to activate and read in the settings previously made in the hörbert software. hörbert emits two short beeps to confirm.
- 5) hörbert is now playing from its memory card again.
- 6) If you now click on the button and up to the place where you previously stored the web radio address, hörbert searches for the available WLAN and the radio station. It emits several ascending signal tones. As soon as it has found the WLAN and the radio station, it plays the radio station.
- 7) To end the function as a radio, switch off hörbert by pressing its on/off switch (1) once, or select another title that is on the memory card.

## 10 Recording with a 1 or 3 button hörbert

To use hörbert's microphone functions, you must have a model with a built-in microphone and first switch on

hörbert's microphone functions in **SET mode** as described above. See chapter 7.

On a hörbert with nine coloured playlist buttons, you start a voice recording by pressing and holding the black button at the very bottom left and at the same time briefly pressing the grey button next to it.

To stop recording, press the black button again.

A hörbert with 1 or 3 buttons has no black or grey button. Therefore, recordings are started as described below.

If your hörbert has a built-in speech microphone, a red light will light up there as a recording indicator. A hörbert without a speech microphone produces a short signal tone instead.

### 10.1 Voice recording with a 1 or 3 button hörbert

If your hörbert has the optional built-in microphone, you can record your own texts and songs.

A few things need to be prepared so that recordings with a 1 or 3 button hörbert are possible without making a mess on the memory card:

#### 10.2 Switch on microphone

Start the hörbert software and read in the memory card

- 1) In the hörbert software menu, select "**Extras**" -> "**Configure Set Mode**".
- 2) Select the setting "**Allow**" for "**Microphone**".
- 3) Click on "**Save**" to save the settings you have made.

#### 10.3 Specifying the playlists in which recordings should be allowed

- 1) Open the content window of the hörbert button on which you want to allow recordings via microphone, Bluetooth or Internet radio by clicking with the mouse on the button symbol.
- 2) At the bottom of the window you will find the setting option "**Allow microphone recordings here**". Click here if you want to save voice

recordings on this button. Voice recordings are always saved behind the file that was running when you started the recording.

- 3) At this point, you can also allow **recordings from the Internet radio** or for **Bluetooth recordings** for the button. Such recordings always end up at the end of the playlist.
- 4) **Note:** Only one playlist can be selected for Bluetooth recordings. Microphone recordings and Internet radio recordings can be allowed in multiple playlists.



Figure 17 - Allow microphone recordings here

- 5) Exit the content window by clicking on the tick at the top right.

#### 10.4 Set recording mode via the index.m3u file

- 1) On a hörbert with 1 or 3 buttons, **you start a recording by pressing the corresponding coloured button for approx. 2 seconds**. This button must have been released for the respective recording option via the hörbert software beforehand.
- 2) If this does not work with your hörbert, then you have a unit that has not yet received this setting for the so-called **recording mode** from us at the factory. You can set the recording mode yourself at home on your computer or with the help of our service team.
- 3) Please contact the service team at [service@winzki.de](mailto:service@winzki.de) or by phone on 07022 506420 if you have any questions.
- 4) To do so, it is then necessary to open the **file "index.m3u"**, which is located in the main directory on the memory card, with a text editor (e.g. textedit or Edit) and copy the following text below "#EXTM3U":

```
#EXTM3U
#hoerbert:recording_button_mode 1
```

In this example, recording mode 1 has been set:



Figure 18 - Example: Setting the Recording Mode

You can also set other recording modes instead of **1** :

- 0** - recording starts by holding the black button and pressing the grey button. (Only possible for 9-button-units)

- 1** - **Standard mode hörbert with 1 or 3 buttons: the recording starts by pressing a coloured button for a longer time (approx. 2 seconds).**
- 2** - the recording starts and runs only as long as a coloured button is pressed and held.
- 3** - recording starts when a colourful button is pressed for a long time and the rotary knob is turned to the right at the same time

**Tip:** If the file "index.m3u" is not yet on your memory card, it will be created by the hörbert software when you use it to set the playlists in which recordings should be possible.

- 1) After you have made the settings for recordings on the memory card, eject the memory card properly via the eject button and disconnect it from the computer.
- 2) Insert the card back into hörbert.
- 3) Switch on hörbert and briefly press the SET button inside 1x.
- 4) Press the SET button inside again after 2 seconds to save the changes.

## 11 hörbert's power supply

hörbert is suitable for operation with 4 AA rechargeable batteries or batteries. As an option at the time of purchase, a power supply via the socket is

available with a plug-in power supply unit. This option can also be retrofitted in our workshop for hörbert models from October 2021 (model without toggle switch). Either mobile operation with rechargeable batteries or stationary operation with a power supply unit is possible.

**IMPORTANT** The power supply by cable is not used to charge batteries in the unit!

For safety reasons, charging of inserted rechargeable batteries is not possible with this solution, because hörbert cannot detect whether rechargeable batteries or batteries are inserted.

### 11.1 Switching between cable operation and battery operation

**ATTENTION:** Batteries may only be inserted or changed and the power adapter plugged in by a suitably qualified adult!

**ATTENTION:** The plug-in power supply unit must supply a DC voltage of 6V/1A. Suitable power supply units are available in our shop.

- 1) If hörbert is to be operated stationary via a plug-in power supply unit at the socket, the batteries must be removed first. To do this, pull the batteries one by one vertically upwards out of the battery clips (4). The batteries are very tight so that they do not fall out in case of shocks. Tip: As an aid, thread a string underneath a battery. This makes it easy to pull it upwards without damaging the circuit board, the battery or the battery clips. Hold the battery firmly while doing this.
- 2) Put all four removed batteries aside for reuse. Bundle batteries that belong together, e.g. with adhesive tape.
- 3) hörbert's power connector is in slot C on hörbert's main board, which is in the middle of the lowest battery slot. You must unplug this connector for battery operation and plug it in for operation via plug-in power supply. When plugged in, the grey ribbon cable points away from the board, the plug for slot C can only be inserted in the correct orientation.

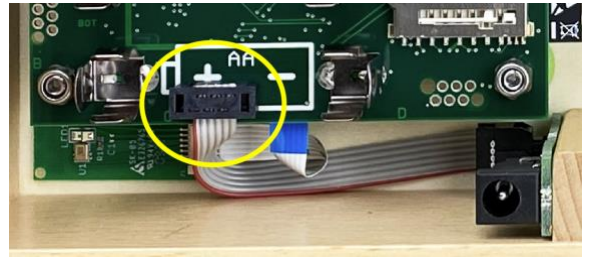


Figure 19 - Correct fit of the power supply

- 4) Push the back panel back in and close it with the back panel screw.
- 5) Insert the power connection cable into the socket through the opening provided in the rear panel and plug the power supply unit into the socket at the other end of the cable.

## 12 External operating aids

Optionally, your hörbert can be equipped with a socket for external operating aids ex works. This option can also be retrofitted in our workshop for hörbert models from October 2021 (model without toggle switch).



Figure 20 - Socket for external operating aids

A socket for external operating aids is used exclusively for connecting external buttons or control devices. This enables people with disabilities to turn hörbert on and off and to switch between titles or playlists.

**ATTENTION:** The socket is not used to connect a power cable or wired headphones! Connecting unsuitable devices can lead to the destruction of the devices or hörberts.

You can also connect two operating aids to one socket for external operating aids using a Y-cable. This

requires a special **Y-cable** that combines the signals from two operating aids.

**NOTE:** The design of the Y-cable is: 3.5mm stereo plug to 2x 3.5mm mono jacks. We offer matching cables in our shop.



Figure 21 - hörbert with two external buttons

In the standard configuration, the first external control aid serves as an on/off switch, the second control aid is used to switch to the next playlist.

By means of a configuration file, other functions can also be assigned to external control elements.

Examples of configuration options:

- Switching on/off with one button, whereby when switching on, the next track in the playlist is played instead of the last track heard
- hörbert only plays while a key remains pressed
- a second external button does not switch to another playlist, but to the next track in the current playlist.

### 13 Problem solving

Nothing can be heard after pressing the on/off switch (1)?

Please check the following:

- 1) Is a memory card inserted correctly?
- 2) Are four full batteries inserted? When using rechargeable batteries, please also test once with fresh commercially available AA batteries to be on the safe side. It is possible that one/several rechargeable battery cells are no longer charging correctly.

- 3) When changing the batteries, if the batteries are removed, carefully bend the opposite metal clips of the battery holders (4) together with two fingers and then reinsert full batteries. This may be necessary, for example, after the unit has fallen or after a strong blow.
- 4) **Do you have the latest firmware update?** See <https://www.hoerbert.com/firmware/>
- 5) If hörbert suddenly goes silent after a few seconds, it is possible that it connected directly to a Bluetooth receiver after being switched on, provided Bluetooth and pairing were activated on hörbert. Please make sure that Bluetooth is switched off on all surrounding devices or deactivate Bluetooth and pairing on your hörbert for testing purposes. See chapter 7.
- 6) If hörbert is connected to Bluetooth headphones: Do the headphones have their own volume control that is set too low?
- 7) Does the memory card contain data? This can be checked with the Explorer (Windows) or the Finder (Mac OS X). The files on the card can also be played back on the computer. Alternatively, reload the memory card with the hörbert software.
- 8) Is the memory card formatted? The memory card must be formatted with a FAT32 file system.
- 9) Was the hörbert software used to upload content? Simply copying any files to the memory card is not sufficient and may result in hörbert not being able to play anything. It is imperative that the hörbert software is used to record onto the memory card.

Has the problem not yet been solved?

You can find further, up-to-date information and solutions to problems in our "FAQ" (Frequently Asked Questions) on our service page:

<https://www.hoerbert.com/service>

You will also find our contact information on our service page. Our service team will be happy to help you at [service@winzki.de](mailto:service@winzki.de).

## 14 User instructions

- Switch off hörbert after use and before opening.
- Do not expose hörbert to direct sunlight or other sources of heat.
- Do not allow liquids to enter the unit.
- To clean, wipe hörbert with a dry or slightly damp cloth. Do not use any cleaning agents.
- Keep these operating instructions in a safe place.

## 15 Safety instructions

- Only use batteries of type 1.5V AA/LR06. Prefer rechargeable batteries (1.2V or 1.5V), as rechargeable batteries cannot leak and damage the unit!
- Never recharge non-rechargeable batteries!
- Recharging batteries may only be done under the supervision of a competent adult!
- Rechargeable batteries must not be charged in the unit and must be removed beforehand!
- Never use batteries of different types together!
- Never use used and new batteries together!
- Always replace all batteries together!
- When removing the batteries, take care not to damage the batteries or the circuit board underneath!
- When inserting the batteries, pay attention to the correct polarity! Observe polarity signs + and -!
- Remove flat batteries or rechargeable batteries from the unit immediately and also if the unit is not used for a longer period of time. Leaking batteries may make it necessary to replace the electronics.

- Never bridge the terminals of the batteries and do not make any connection between the terminals and other metallic parts!
- Use only batteries of the specified type or equivalent.
- Do not use rechargeable batteries or batteries where the casing is damaged, as this can lead to short circuits.

Failure to observe the safety instructions can result in considerable damage to the unit and its environment. There is a risk of injury and fire if the safety instructions are not observed!

## 16 Disposal of batteries / electrical appliances

### Batteries do not belong in household waste!

As the end user, you are legally obliged to return used batteries. You can return used batteries that we stock or have stocked as new batteries free of charge to our dispatch warehouse (at the dispatch address). The return is free of charge for you in case of personal delivery. If you choose to return the batteries by post, you will be responsible for the postage costs. Alternatively, you can return empty batteries and rechargeable batteries free of charge to all retail collection points.

The symbols on the batteries have the following meanings:

### Electrical appliances do not belong in household waste!

You are legally obliged to return old appliances. After use, you can return them to our sales outlet, to a municipal collection point or to your local retailer. You can hand in used appliances to us:  
WINZKI GmbH & Co KG, Benzstr. 2, 72636 Frickenhausen, Germany



The return option is limited to old appliances that we carry or have carried in our product range and to the quantity that end consumers usually dispose of.

The return is free of charge for you if delivered personally. If you choose postal delivery for the return, you will bear the postage costs yourself.



The crossed-out wheeled bin symbol means that the battery/electric appliance must not be disposed of with household waste.

Pb = battery contains more than 0.004% lead by mass

Cd = battery contains more than 0.002 mass percent cadmium

Hg = battery contains more than 0.0005% mercury by mass

Our German WEEE registration number is:  
DE99310248

Our EPR Registration numbers for France are:

WEEE: FR021563\_05FTMU

BAT: FR007993\_06VRGB

PACK: FR207604\_01QMWW