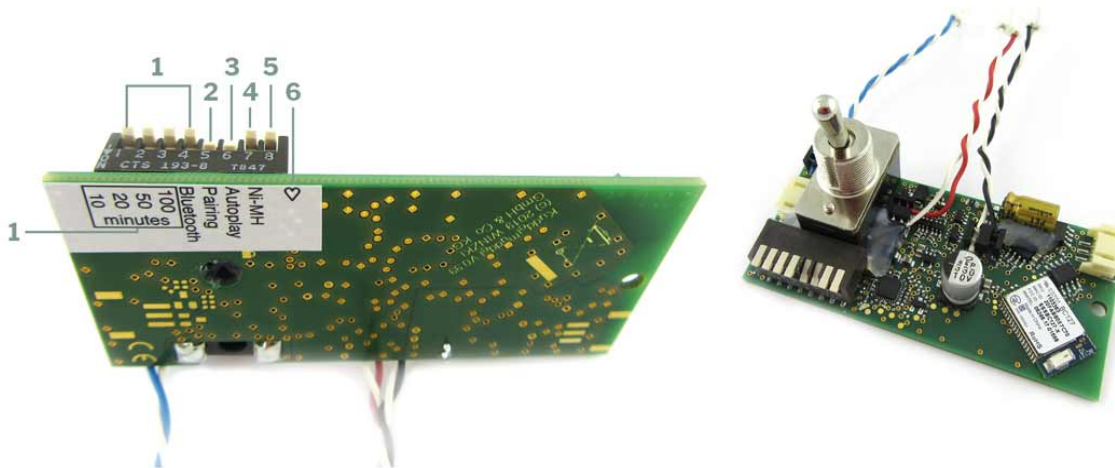


Dear customer,

With the **Bluetooth module (BT module)**, your hörbert has **additional electronics** that make it even more flexible: With the BT module, you can **connect up to two headphones** with hörbert and also **use hörbert as a Bluetooth loudspeaker**. The Bluetooth module contains an **automatic switch-off function (sleep timer)**, with which hörbert can switch itself off automatically after an adjustable time. To ensure that every hörbert since 2011 can stay with their owners, we have developed the BT module as an electronic retrofit. So every hörbert can be equipped with this function. Installation instructions and the installation video can be found at www.hoerbert.com/manuals

1 The Bluetooth module for hörbert looks like this:



1.1 Explanation of digits in the picture above:

All settings on the BT module are made via the 8 switches. The factory settings are visible in the picture above. A switch is activated when it is set downwards to the ON position, conversely the respective function is switched off (OFF) when the switch is set upwards.

- 1) Switch 1-4: "10, 20, 50, 100 minutes": Selectable playing time for automatic sleep timer.
- 2) Switch 5 "Bluetooth": Can be used to switch the Bluetooth function on or off. This function is activated (ON) on delivery.
- 3) Switch 6 "Pairing": Here you can set whether hörbert can connect to a new, unknown device. This function is activated (ON) on delivery.
- 4) Switch 7 "Autoplay": Here you set whether hörbert automatically connects to the last paired device after switching on and starts playback.
- 5) Switch 8 "Ni-MH": Battery protection to prevent deep discharge of batteries.
- 6) Heart: light emitting diode; this indicates in which mode the BT module is. See point 3.2.4.4.

2 First Steps

Our recommendation for the commissioning of your hörbert with Bluetooth module:

- ❖ Switch 1-4: Select the desired playing time, after which your hörbert should switch off automatically. If you do not want to set a playing time, leave switches 1 to 4 in their factory settings (OFF).
- ❖ Pair - one after the other - all the devices in your household that hörbert should allow a connection to in the future. How this works can be found under point 3.2.2.) "Pairing devices with hörbert".
- ❖ Then turn switch no. 6 to OFF position (top). This will prevent unwanted or foreign devices from connecting to your hörbert.

3 Main Functions of the Bluetooth module

3.1 Automatic switch-off

- If switches 1 to 4 are "off", hörbert continues to play until it is manually switched off with the toggle switch.
- When the automatic switch-off is activated, hörbert switches off after the set playing time, even though its toggle switch is in the ON position, i.e. tilted forward to the hörbert front.
- **Please explain to your child that hörbert only plays again after the automatic switch-off when the toggle switch is switched off and then on again.**
- **Behavior when batteries or rechargeable batteries run out:**
The BT module also includes battery protection. Without these additional electronics, a standard hörbert becomes quieter and "croaks" when the batteries are empty. In the case of a hörbert with BT module and integrated automatic switch-off, **the tone is briefly switched off at intervals**. When the batteries or accumulators are completely empty, hörbert switches itself off completely, or stops playing at all after switching on, until you insert new cells again.

3.1.1 Automatic switch-off settings

To select the desired playing time, move one of the switches 1 to 4 according to the following table. If the switch is pressed down, the corresponding playing time is activated.

Switch 1 10	Switch 2 20	Switch 3 50	Switch 4 100	approx. playing time in minutes
ON	OFF	OFF	OFF	10 min
OFF	ON	OFF	OFF	20 min
OFF	OFF	ON	OFF	50 min
OFF	OFF	OFF	ON	100 min
OFF	OFF	OFF	OFF	Infinitely

Combinations between switches are also possible. So you can choose further playing durations, e.g. if you activate two switches together, here a few examples:

Switch 1 10	Switch 2 20	Switch 3 50	Switch 4 100	approx. playing time in minutes
ON	ON	OFF	OFF	30 min
ON	OFF	ON	OFF	60 min
ON	ON	ON	OFF	80 min
OFF	ON	OFF	ON	120 min

3.1.2 Note for the settings of the playing time:

The setting of the playing time is only valid from the next switch-on, you cannot shorten or extend the time during the playing.

3.1.3 Settings for the battery/battery protection

For optimal protection of your batteries you can adjust the protection circuit: In the case of rechargeable batteries, a deep discharge must be prevented, batteries can be emptied to a greater extent, early leakage of the batteries can in some cases be postponed.

Do you use accumulators? (Recommended)
Then set **switch 8 to ON**

Do you use hörbert with alkaline batteries?
Then set **switch 8 to OFF**.

Note: Please remove empty batteries or rechargeable batteries from the device immediately. If you do not use your hörbert for a longer period of time (e.g. several days at a time, holidays), you should also remove the rechargeable batteries in order to avoid damage to your hörbert.

3.2 The Bluetooth functions

3.2.1 Switching the Bluetooth function on and off

We deliver a hörbert with Bluetooth module in activated Bluetooth mode ex-factory. This means that switch no. 5 "Bluetooth" is set to position ON.

To be able to connect to a Bluetooth-capable device (e.g. mobile phone or headset), the "Pairing" function is also activated ex-factory (switch no. 6 to ON).

If you do not want to use the Bluetooth function yet, move switch no. 5 "Bluetooth" to the OFF position (upwards). Then the entire radio transmitter is deactivated.

3.2.2 Pairing devices with hörbert

To be able to connect hörbert to one or more devices, the "Pairing" function must be activated. Switch no. 6 must be in the ON position.

Always connect one device after the other with hörbert according to the following steps:

3.2.2.1 Connecting to headphones

➤ **How do I connect my hörbert with headphones for the first time: Pairing**

1. Turn on your headphones.
2. Activate Bluetooth mode on your headphones, if they have an extra switch for it.
3. Switch on hörbert. Bluetooth and pairing must be activated (switch 5 and 6 to ON)
4. hörbert now has **one minute** to find an active receiver and connect to the headphones. As soon as the connection is established, the audio content is only played back via the headphones.
5. As soon as the headphones are switched off, hörbert plays back its listening content via its integrated loudspeaker.

If the headphones are not playing after one minute, simply try again from step 1.

➤ **How do I connect my hörbert to two headphones?**

1. First connect headphones no. 1 as described above.
2. After successful connection, you automatically have **one minute** to connect the second pair of headphones again:
3. So, switch on headset no. 2 and (if necessary) activate the Bluetooth mode on the headset.
4. hörbert now also connects to headphones no. 2 and outputs the listening content to both headphones.

3.2.2.2 Volume control when listening with headphones

❖ **Headphones without volume control:**

The volume can be adjusted using the knob on the hörbert.

❖ **Headphones with their own volume control:**

The volume can be adjusted using the hörbert knob or the headphones.

Attention:

- If the volume on the headphones is set to very low, you will not hear anything, even if the volume is turned up on the hörbert.
- The amplifier in the headphones determines the maximum playback volume. It is therefore possible that the audio content is played back louder than hörbert would normally output via its loudspeaker.
- When choosing headphones, **it is therefore essential to make sure that they are especially suitable for children and have their own volume limit.**
- Even then, the upper limit can still be as high as 85 decibels, which in our opinion is quite high.
- Limit the duration of usage for headphones!

3.2.3 hörbert as a Bluetooth loudspeaker

hörbert can be used as a Bluetooth loudspeaker if it is connected to a corresponding Bluetooth transmitter, e.g. mobile phone/tablet. In this way you can also listen to streaming services like Audible, Spotify, Deezer etc. with hörbert.

The following settings must be selected for the first connection:

- ❖ Switch 5 "Bluetooth" - ON
- ❖ Switch 6 "Pairing" - ON

3.2.3.1 Procedure:

1. Hold the device (e.g. mobile phone) ready whose contents you want to play back with hörbert (transmitter).
2. The Bluetooth function must be activated on the transmitter. You can select this via the settings on your device.
3. **Now switch on hörbert and immediately (within 3 seconds) off again.**
The loudspeaker mode is now activated. hörbert emits a short beep to confirm.
4. hörbert now appears in the list of devices to be connected via Bluetooth. You will probably also find this list in the settings of your transmitter device in the menu item "Bluetooth".
5. Select hörbert in the list.
6. Select your music/audio plays via the transmitter device.
7. These will now be played via hörbert.

3.2.3.2 Volume control in speaker mode

The volume setting on the transmitter device (e.g. mobile phone) determines the maximum volume of hörbert. Example: A medium volume is set on the mobile phone. The playback volume on hörbert can be set lower, but not higher than this medium volume.

3.2.3.3 The function "Autoplay" (switch 7)

If switch 7 is in the ON position, hörbert automatically connects to the last connected device in loudspeaker mode and starts playback if the playback app on the device (e.g. mobile phone) supports this.

Example 1:

A few days ago, you streamed music from your mobile phone. Your child switches his or her hörbert to speaker mode (toggle switch on -> off). If your mobile phone is nearby, switched on and Bluetooth is activated, hörbert will now automatically connect to it.

The music playback app on your phone supports instant playback: The last playlist/title listened to will be started.

The music playback app on the phone does not support immediate, automatic playback: Music playback must be started actively on the phone so that hörbert can play the audio content.

Example 2:

Another person, e.g. the aunt who is visiting, would like to connect her mobile phone (device 2) to hörbert. hörbert is in speaker mode, the "Autoplay" function is switched on.

-> hörbert tries to connect to the last connected device 1, and the aunt therefore cannot connect to hörbert.

Solution:

- Disconnect the connection between device 1 and hörbert on device 1, e.g. switch off Bluetooth on device 1.
- Now device 2 can connect to hörbert, if switch 6 ("Pairing") is in position ON.

If you don't want hörbert to automatically pair with the last connected device after activating speaker mode, then first deactivate the "Autoplay" function by setting switch 7 to position OFF (up).

3.2.4 Other Functions

3.2.4.1 The LED display:

- Flashing every second: Bluetooth mode is activated
- Flashing 2 times per second: "Pairing" is activated, hörbert can accept a new device.
- Lights up for a long time (approx. 3 sec): Acknowledgement if all pairings have been successfully deleted.

3.2.4.2 Deleting pairings: Forget all known devices.

It is possible that you want to delete the connection of single or multiple devices with hörbert. However, you cannot delete single pairings, only all paired devices at the same time.

- Hörbert must first be switched off.
- Pairing (switch 7) must be set to ON.
- Now switch on hörbert.
- Within 30 seconds after switching on, set switch no. 7 to the OFF position.
- Then all pairings are deleted. The LED on the upper side lights up continuously for 3 seconds to confirm that all connections have been successfully deleted.

3.2.4.3 Listening to hörbert in the car

The Bluetooth module of hörbert can also connect to music systems in cars. In this way, the content stored on hörbert's memory card can also be played back via the car's music system. However, cars of different brands differ greatly when it comes to pairing.

Procedure:

1. Switch on hörbert.
2. Start the search for BT devices on the car.
3. If hörbert is found, select him.
 - a. Your car might connect to hörbert right away? Congratulations!
 - b. Otherwise connect again with hörbert, your car should show a number that you simply accept.
4. hörbert's contents are now played back via the car's music system.

4 Possible faults and bug fixes

If playback via headphones does not work, this may be due to one of the following reasons:

- a. It took too long to activate the headphones (after 1-minute hörbert no longer searches for a transmitter/receiver).
→ Solution: Switch hörbert off and on again and try again. Make sure the headphones are already on and in Bluetooth mode.
- b. The connection is not established for other reasons. Only smacking noises can be heard in the headphones.
→ Solution: Press Play/Pause once briefly on your headphones. If you have connected two headphones, you may have to press play/pause once on both headphones one after the other.
- c. The connection seems to be established, but nothing can be heard.
→ Your headphones may have their own volume control. If this is the case, the volume on the headphones may be turned down. Please turn up.

5 Service

Please do not hesitate to contact us if you have any questions:

Via the contact form at www.hoerbert.com/service

By email: service@winzki.de

By phone: +49(0)7022 506420
Monday to Friday from 9:00 - 12:00 und 13:00 - 15:00

6 Disposal of electrical equipment

Electrical appliances should not be disposed of with household waste!



Appliances that are marked with this symbol must not be disposed of with the household waste!
Our WEEE-registration number is: DE99310248

You are legally obliged to reuse or recycle old equipment. After use, you can return them to our point of sale, a municipal collection point or in the local trade. You can return used equipment to us: WINZKI GmbH & Co. KG, Benzstr. 2, 72636 Frickenhausen, Germany

The return option is limited to old equipment that we carry or have carried in our product range and to the quantity that end users usually dispose of.

The return is free of charge for you in case of personal delivery. If you choose to return the goods by post, you will bear the postage costs yourself. For more information on recycling, please contact your local authority.